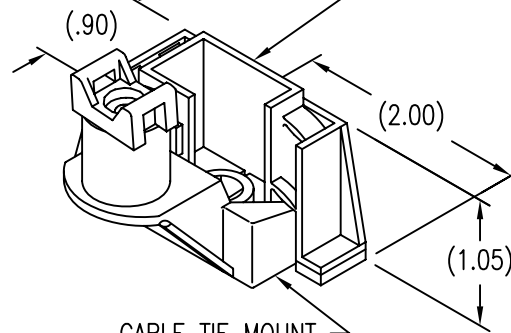
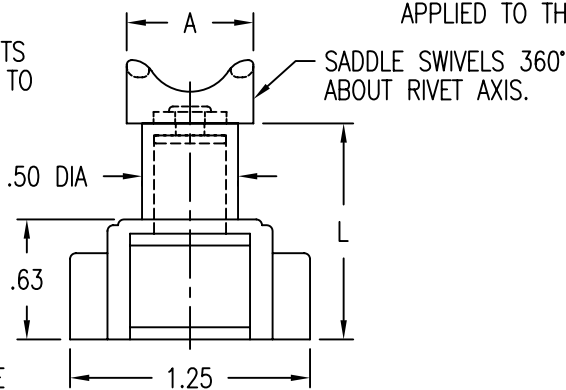
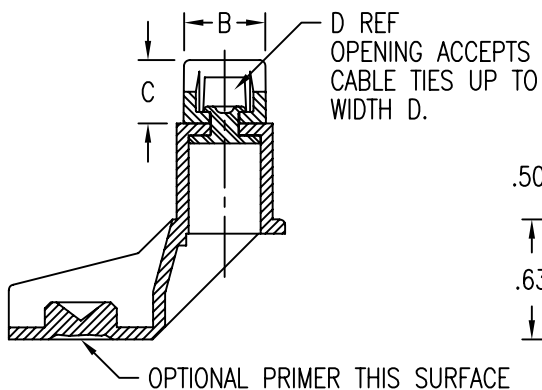


DISPOSABLE PRESSURE SENSITIVE ADHESIVE FIXTURE HOLDS CABLE TIE MOUNT WHILE ADHESIVE CURES.



CABLE TIE MOUNT ATTACHED BY ADHESIVE APPLIED TO THIS SURFACE.



SADDLE MATERIAL AND FINISH DATA

CODE	MATERIAL	SPEC.	COLOR
N	NYLON, NATURAL	ASTM D4066 OR EQUAL	NATURAL
NB	NYLON, BLACK, STABILIZED	ASTM D4066 OR EQUAL	BLACK
P	PEEK	NONE	NATURAL
T	FLUOROPOLYMER	TEFZEL	BLUE
V	POLYETHERIMIDE	ULTEM 1000 OR EQUAL	NATURAL
VC	CARBON/PEI	ASTM D5205	NATURAL

DIMENSION DATA

SIZE CODE	MAX TIE WIDTH D REF	SADDLE DIMENSIONS		
		A	B	C
2	.100	.56	.34	.27
3	.190	.67	.44	.33
5	.350	.92	.56	.42

BASEPLATE MATERIAL

CODE	MATERIAL	FINISH
V	GLASS/PEI	ABRASIVE CLEAN

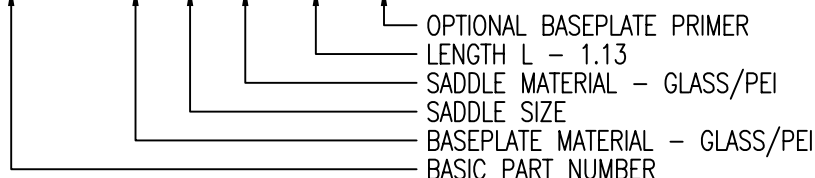
RIVET MATERIAL: 300 SERIES OR A-286 CRES.
 RIVET FINISH: PASSIVATE PER AMS 2700.
 MANUFACTURER'S OPTION: 300 SERIES CRES TRIM WASHER UNDER RIVET HEAD.

LENGTH DATA

CODE	L	WEIGHT (LB/100)
10	.63	
18	1.13	
22	1.38	
24	1.50	
28	1.75	
32	2.00	
34	2.13	

EXAMPLE PART NUMBER

CB4013 V 3 V 18 P



OPTIONAL PRIMER

CODE	MATERIAL SPEC.
P	MIL-PRF-85582

UNLESS OTHERWISE SPECIFIED, ALL DIMENSIONS ARE IN INCHES AND TOLERANCES ARE AS SHOWN BELOW. DIMENSIONAL TOLERANCES AND SYMBOLS PER ANSI Y14.5M-1982.

PROPRIETARY PARTS SHOWN IN THIS DRAWING ARE THE SUBJECT OF ISSUED UNITED STATES AND FOREIGN PATENTS AND PATENTS PENDING. UNAUTHORIZED REPRODUCTION AND/OR DISTRIBUTION OF THIS DRAWING IS SPECIFICALLY PROHIBITED.



CARSON CITY NEVADA 89706

ANGLES	±1°	APPROVALS		DATE
		DRAWN	DATE	TITLE
.XX	±.03	DAC	15DEC06	MOUNT, CABLE TIE, OFFSET STANDOFF BASEPLATE
.XXX	±.010	DAC	15DEC06	
.XXXX	±.001	CGH	15DEC06	
		DAC	15DEC06	

SIZE	CAGE CODE	DWG. NO.	REV.
A	66530	CB4013	1
SCALE	1/1	15DEC06	SHEET 1 OF 1