

SADDLE MATERIAL AND FINISH DATA

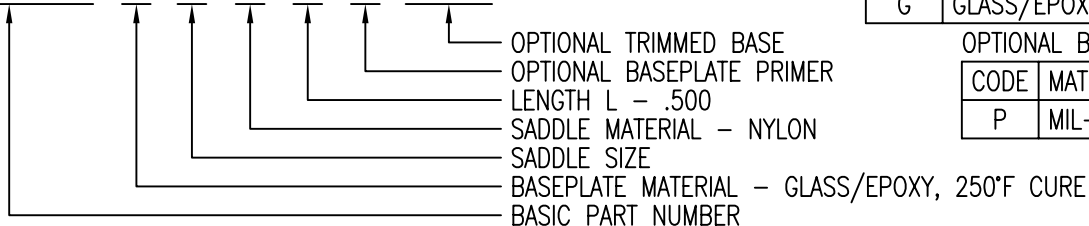
CODE	MATERIAL	SPEC.	COLOR
K	PEKK	NONE	NATURAL
N	NYLON, NATURAL	ASTM D4066 OR EQUAL	NATURAL
NB	NYLON, BLACK, STABILIZED	ASTM D4066 OR EQUAL	BLACK
NH	NYLON, HEAT STABILIZED	ASTM D4066 OR EQUAL	NATURAL
P	PEEK	NONE	NATURAL
T	TEFZEL	FLUOROPOLYMER	BLUE
V	POLYETHERIMIDE	ULTEM 1000 OR EQUAL	NATURAL
VC	CARBON/POLYETHERIMIDE	ULTEM 7201 OR EQUAL	NATURAL

RIVET MATERIAL: 300 SERIES OR A-286 CRES  
 RIVET FINISH: PASSIVATE PER AMS 2700

MANUFACTURER'S OPTION: 300 SERIES CRES WASHER UNDER RIVET HEAD

EXAMPLE PART NUMBER

CB4020 G 3 N 8 P 750



DIMENSION DATA

SIZE CODE	MAX TIE WIDTH D REF	SADDLE DIMENSIONS		
		A	B	C
2	.100	.56	.34	.27
3	.190	.67	.44	.33
5	.350	.92	.56	.42

LENGTH DATA

CODE	6	8	12	16	24
L ±.030	.375	.500	.750	1.000	1.500
X ±.015	.750	.875	1.125	1.375	1.875
Y ±.015	1.000	1.125	1.375	1.625	2.125

BASEPLATE MATERIAL

CODE	MATERIAL
C	CARBON/EPOXY, 350°F CURE
E	GLASS/EPOXY, 350°F CURE
G	GLASS/EPOXY, 250°F CURE

OPTIONAL BASEPLATE PRIMER

CODE	MATERIAL SPEC.
P	MIL-PRF-85582

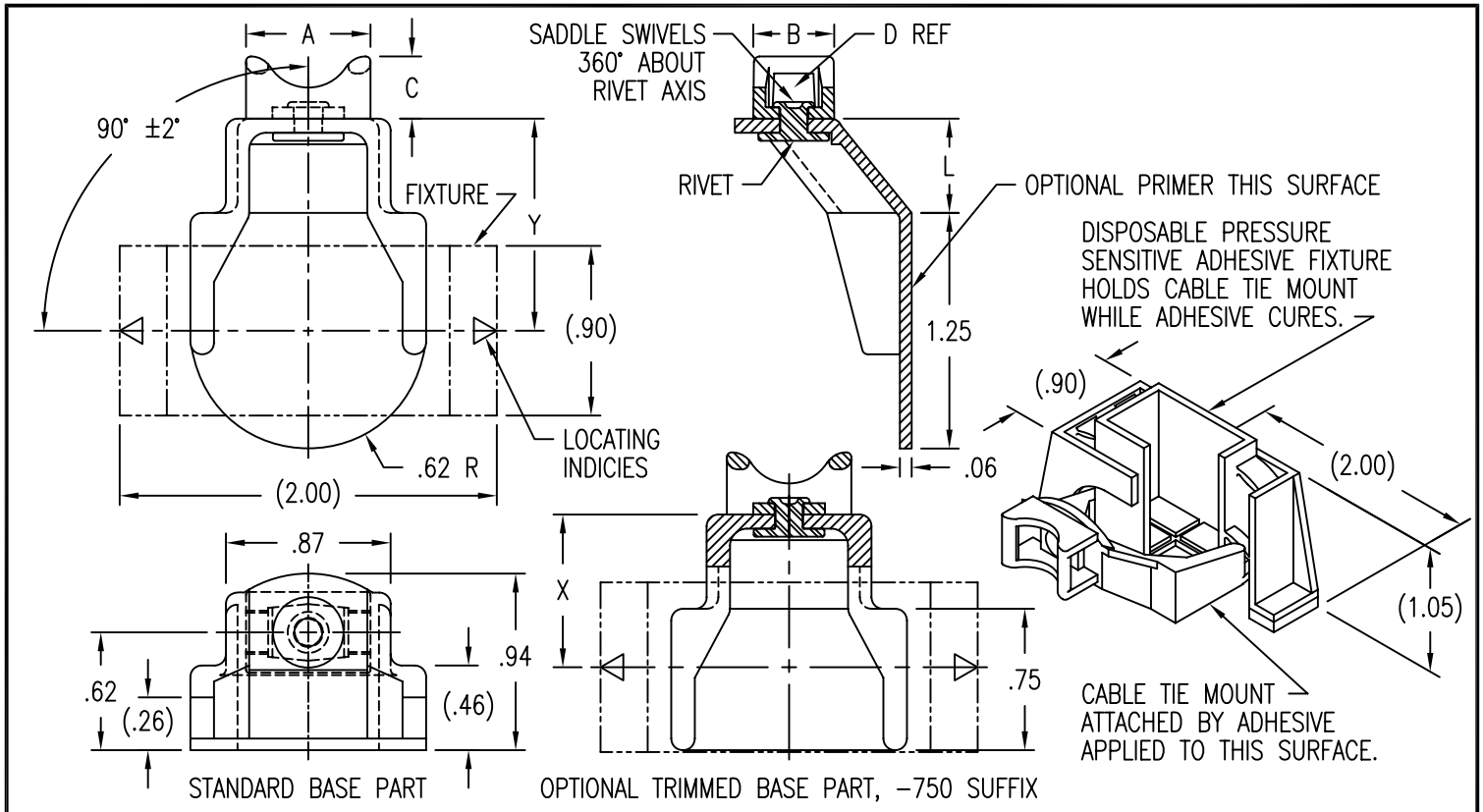
UNLESS OTHERWISE SPECIFIED, ALL DIMENSIONS ARE IN INCHES AND TOLERANCES ARE AS SHOWN BELOW. DIMENSIONAL TOLERANCES AND SYMBOLS PER ANSI Y14.5M-1982.

PROPRIETARY PARTS SHOWN IN THIS DRAWING ARE THE SUBJECT OF ISSUED UNITED STATES AND FOREIGN PATENTS AND PATENTS PENDING. UNAUTHORIZED REPRODUCTION AND/OR DISTRIBUTION OF THIS DRAWING IS SPECIFICALLY PROHIBITED.



CARSON CITY  
NEVADA 89706

APPROVALS		DATE	TITLE			
CAD	CB4020-1		MOUNT, CABLE TIE, RIGHT ANGLE, COMPOSITE			
ANGLES	±1°	DRAWN	SIZE	CAGE CODE	DWG. NO.	REV.
.XX	±.03	DAC	A	66530	CB4020	19
.XXX	±.010	CHECKED	SCALE	1/1	6JUL09	SHEET 1 OF 2
.XXXX	±.001	RELEASED				
		REVISD				



SADDLE MATERIAL AND FINISH DATA

CODE	MATERIAL	SPEC.	COLOR
K	PEKK	NONE	NATURAL
N	NYLON, NATURAL	ASTM D4066 OR EQUAL	NATURAL
NB	NYLON, BLACK, STABILIZED	ASTM D4066 OR EQUAL	BLACK
NH	NYLON, HEAT STABILIZED	ASTM D4066 OR EQUAL	NATURAL
P	PEEK	NONE	NATURAL
T	TEFZEL	FLUOROPOLYMER	BLUE
V	POLYETHERIMIDE	ULTEM 1000 OR EQUAL	NATURAL
VC	CARBON/POLYETHERIMIDE	ULTEM 7201 OR EQUAL	NATURAL

DIMENSION DATA

SIZE CODE	MAX TIE WIDTH D REF	SADDLE DIMENSIONS		
		A	B	C
2	.100	.56	.34	.27
3	.190	.67	.44	.33
5	.350	.92	.56	.42

LENGTH DATA

CODE	6	8	12	16	24
L ±.030	.375	.500	.750	1.000	1.500
X ±.015	.750	.875	1.125	1.375	1.875
Y ±.015	1.000	1.125	1.375	1.625	2.125

MANUFACTURER'S OPTION: 300 SERIES CRES WASHER UNDER RIVET HEAD

RIVET MATERIAL: 300 SERIES OR A-286 CRES  
 RIVET FINISH: PASSIVATE PER AMS 2700

OPTIONAL BASEPLATE PRIMER

CODE	MATERIAL SPEC.
P	MIL-PRF-85582

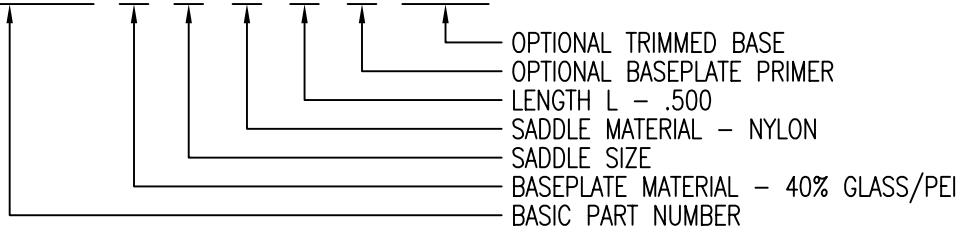
BASEPLATE MATERIAL

CODE	MATERIAL
U	30% GLASS/PEI
UC	30% CARBON/PEI
V	40% GLASS/PEI
VC	40% CARBON/PEI
W	30% GLASS/PEI *
WC	30% CARBON/PEI *

\* LOW HEAT RELEASE

EXAMPLE PART NUMBER

CB4020 V 3 N 8 P 750



UNLESS OTHERWISE SPECIFIED, ALL DIMENSIONS ARE IN INCHES AND TOLERANCES ARE AS SHOWN BELOW. DIMENSIONAL TOLERANCES AND SYMBOLS PER ANSI Y14.5M-1982.

PROPRIETARY PARTS SHOWN IN THIS DRAWING ARE THE SUBJECT OF ISSUED UNITED STATES AND FOREIGN PATENTS AND PATENTS PENDING. UNAUTHORIZED REPRODUCTION AND/OR DISTRIBUTION OF THIS DRAWING IS SPECIFICALLY PROHIBITED.



CARSON CITY  
 NEVADA 89706

CAD CB4020-2		APPROVALS	DATE	TITLE			
ANGLES	±1°	DRAWN	6JUL09	MOUNT, CABLE TIE, RIGHT ANGLE, COMPOSITE			
.XX	±.03	CHECKED	6JUL09	SIZE	CAGE CODE	DWG. NO.	REV.
.XXX	±.010	RELEASED	9JUL09	A	66530	CB4020	19
.XXXX	±.001	REVISED	6JUL09	SCALE	1/1	6JUL09	SHEET 2 OF 2