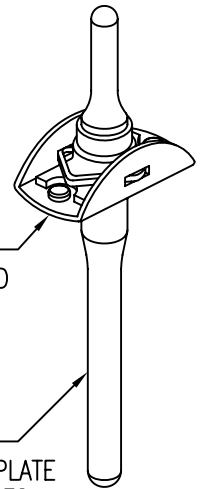


NUTPLATE ATTACHED BY ADHESIVE APPLIED TO THIS SURFACE.

DISPOSABLE ELASTIC FIXTURE HOLDS NUTPLATE WHILE ADHESIVE CURES.



THREAD AND DIMENSION DATA (ALL DIMENSIONS BEFORE PAINT)

PART NUMBER	THREAD T	A MAX	B MAX	D MIN	H MAX	R MIN	U DIA	MINIMUM AXIAL TENSILE STRENGTH (LBS)	APPROX. WEIGHT (LB/100)
CN609CR08	.1640-32 UNC	.745	.454	.224	.250	.070	.164-.224	1720	.54
CN609CR3	.1900-32 UNF	.745	.454	.250	.250	.070	.190-.250	2460	.57
CN609CR324	.1900-24 UNC							2010	
CN609CR4	.2500-28 UNF	.948	.554	.312	.295	.070	.250-.312	4580	1.04
CN609CR420	.2500-20 UNC							3760	
CN609CR5	.3125-24 UNF	1.042	.650	.375	.344	.070	.313-.375	7390	1.52
CN609CR518	.3125-18 UNC							6360	

BASEPLATE MATERIAL AND FINISH DATA

CODE	MATERIAL	FINISH
CR	A-286 CRES	PASSIVATE

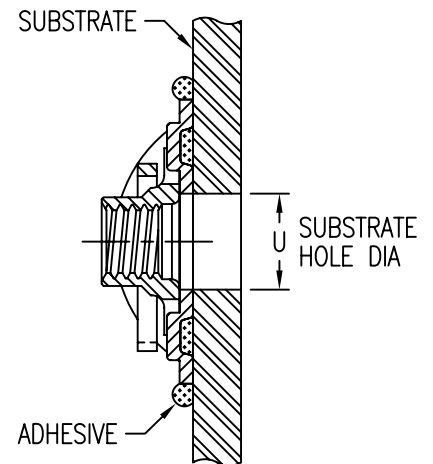
NOTE: APPROX. WEIGHT WITHOUT INSTALLATION FIXTURE

NUT MATERIAL AND FINISH DATA (SEE CN601)

CODE	MATERIAL	FINISH	LUBRICATION
CR	A-286 CRES	PASSIVATE	DRI-FILM LUBE

CLIP MATERIAL AND FINISH DATA (SEE CN602)

CODE	MATERIAL	FINISH
CR	XM-28 STAINLESS STEEL (UNS S24100)	PASSIVATE



EXAMPLE PART NUMBER

CN609 CR 3 P

OPTIONAL BASEPLATE EPOXY PRIMER  
 THREAD SIZE - .190-32 UNF  
 NUT AND BASEPLATE MATERIAL - A-286 CRES  
 BASIC PART NUMBER

UNLESS OTHERWISE SPECIFIED, ALL DIMENSIONS ARE IN INCHES AND TOLERANCES ARE AS SHOWN BELOW. DIMENSIONAL TOLERANCES AND SYMBOLS PER ANSI Y14.5M-1982.

PROPRIETARY PARTS SHOWN IN THIS DRAWING ARE THE SUBJECT OF ISSUED UNITED STATES AND FOREIGN PATENTS AND PATENTS PENDING. UNAUTHORIZED REPRODUCTION AND/OR DISTRIBUTION OF THIS DRAWING IS SPECIFICALLY PROHIBITED.

**CLICK BOND**

CARSON CITY  
NEVADA 89706

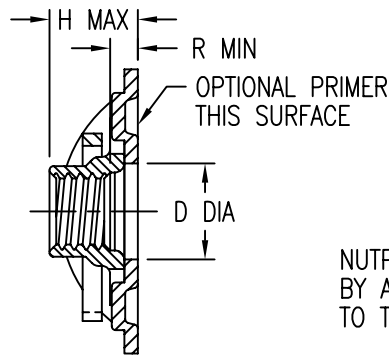
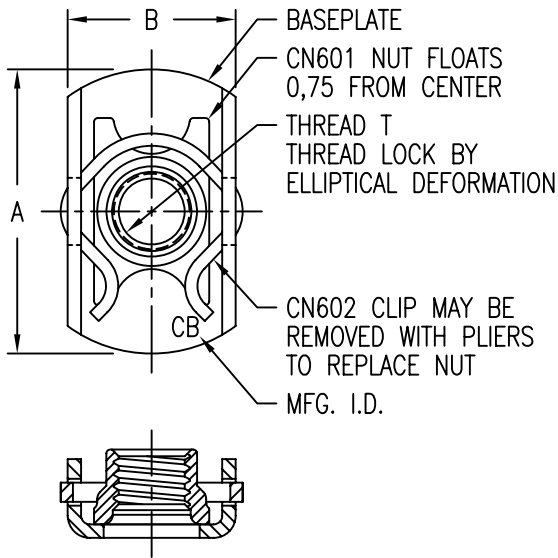
CAD CN609-1

APPROVALS	DATE
DRAWN <i>DAC</i>	9SEP09
CHECKED <i>DAC</i>	9SEP09
RELEASED <i>CGH</i>	9SEP09
REVISED <i>DAC</i>	9SEP09

TITLE  
NUTPLATE, TWO LUG, ADHESIVE BONDED

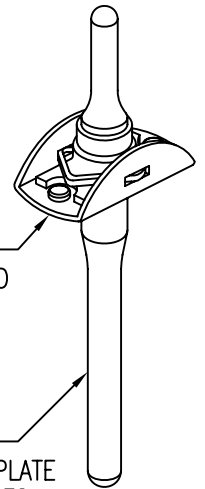
ANGLES	±1°
.XX	±.03
.XXX	±.010
.XXXX	±.001

SIZE	CAGE CODE	DWG. NO.	REV.
A	66530	CN609	4
SCALE	2/1	9SEP09	SHEET 1 OF 2



NUTPLATE ATTACHED BY ADHESIVE APPLIED TO THIS SURFACE.

DISPOSABLE ELASTIC FIXTURE HOLDS NUTPLATE WHILE ADHESIVE CURES.



THREAD AND DIMENSION DATA (ALL DIMENSIONS BEFORE PAINT)

PART NUMBER	THREAD T	A MAX	B MAX	D MIN	H MAX	R MIN	U DIA	MINIMUM AXIAL TENSILE STRENGTH (kN)	APPROX. WEIGHT (GRAMS)
CN609( )4M	M4 X 0,7	19,0	11,6	5,50	5,2	1,6	4,0-5,5	7,6	2,6
CN609( )5M	M5 X 0,8	19,0	11,6	6,35	6,2	1,6	5,0-6,35	10,9	2,7
CN609( )6M	M6 X 1,0	24,1	14,1	7,50	7,1	1,6	6,0-7,5	19,6	4,8
CN609( )8M	M8 X 1,0	26,5	16,6	9,50	8,2	1,6	8,0-9,5	32,8	7,1

BASEPLATE MATERIAL AND FINISH DATA

CODE	MATERIAL	FINISH
CR	A-286 CRES	PASSIVATE

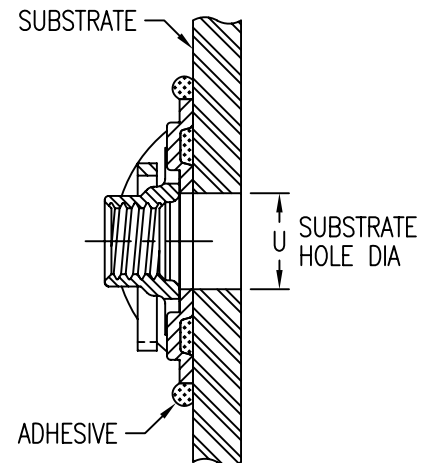
NOTE: APPROX. WEIGHT WITHOUT INSTALLATION FIXTURE

NUT MATERIAL AND FINISH DATA (SEE CN601)

CODE	MATERIAL	FINISH	LUBRICATION
CR	A-286 CRES	PASSIVATE	DRI-FILM LUBE

CLIP MATERIAL AND FINISH DATA (SEE CN602)

CODE	MATERIAL	FINISH
CR	XM-28 STAINLESS STEEL (UNS S24100)	PASSIVATE



EXAMPLE PART NUMBER

CN609 CR 5M P

OPTIONAL BASEPLATE EPOXY PRIMER  
 THREAD SIZE - M5 X 0,8  
 NUT AND BASEPLATE MATERIAL - A-286 CRES  
 BASIC PART NUMBER

UNLESS OTHERWISE SPECIFIED, ALL DIMENSIONS ARE IN MILLIMETERS AND TOLERANCES ARE AS SHOWN BELOW. DIMENSIONAL TOLERANCES AND SYMBOLS PER ANSI Y14.5M-1982.

PROPRIETARY PARTS SHOWN IN THIS DRAWING ARE THE SUBJECT OF ISSUED UNITED STATES AND FOREIGN PATENTS AND PATENTS PENDING. UNAUTHORIZED REPRODUCTION AND/OR DISTRIBUTION OF THIS DRAWING IS SPECIFICALLY PROHIBITED.

**CLICK BOND**

CARSON CITY  
NEVADA 89706

CAD CN609-2 METRIC DIMENSIONS	
ANGLES	±1°
.X	±0,8
.XX	±0,25

APPROVALS	DATE
DRAWN <i>DAC</i>	9SEP09
CHECKED <i>DAC</i>	9SEP09
RELEASED <i>CGH</i>	9SEP09
REVISED <i>DAC</i>	9SEP09

TITLE NUTPLATE, TWO LUG, ADHESIVE BONDED			
SIZE A	CAGE CODE 66530	DWG. NO. CN609 (METRIC)	REV. 4
SCALE 2/1	9SEP09		SHEET 2 OF 2