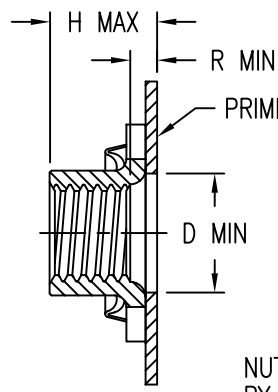
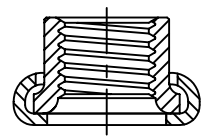


THREAD T
 THREAD LOCK BY
 ELLIPTICAL DEFORMATION.

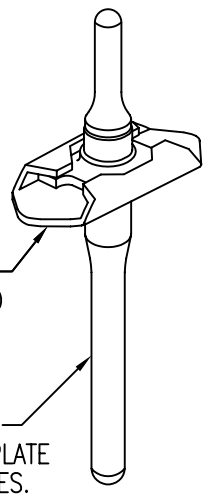
RADIAL FLOAT OF NUT ELEMENT
 .020 MIN FROM CENTER.
 NUT CAN ENGAGE SCREW FROM
 MAX MISALIGNED POSITION.



PRIMER THIS SURFACE.

NUTPLATE ATTACHED
 BY ADHESIVE APPLIED
 TO THIS SURFACE.

DISPOSABLE ELASTIC
 FIXTURE HOLDS NUTPLATE
 WHILE ADHESIVE CURES.



THREAD AND DIMENSION DATA (ALL DIMENSIONS BEFORE PAINT)

PART NUMBER	THREAD T	A MAX	B MAX	D MIN	H MAX	R MIN	AXIAL TENSILE STRENGTH (LBS MIN)	INSTALLATION HOLE RANGE
CN614CR04	.112-40 UNC-2B	.651	.315	.152	.153	-	750	.112 - .152
CN614CR06	.138-32 UNC-2B	.682	.357	.178	.171	-	1130	.138 - .178
CN614CR08	.164-32 UNC-2B	.707	.367	.204	.250	.062	1720	.164 - .204
CN614CR3	.190-32 UNF-2B	.739	.416	.230	.250	.062	2460	.190 - .230
CN614CR324	.190-24 UNC-2B	.739	.416	.230	.250	.062	2010	.190 - .230
CN614CR4	.250-28 UNF-2B	.801	.500	.290	.281	.062	4580	.250 - .290
CN614CR420	.250-20 UNC-2B	.801	.500	.290	.281	.062	3760	.250 - .290
CN614CR5	.312-24 UNF-2B	1.010	.600	.352	.334	.062	7390	.312 - .352
CN614CR518	.312-18 UNC-2B	1.010	.600	.352	.334	.062	6360	.312 - .352

NUT MATERIAL AND FINISH DATA

CODE	MATERIAL	FINISH	LUBRICATION
CR	A-286 CRES	PASSIVATE	DRI-FILM LUBE

PRIMER ON BASEPLATE

CODE	BASEPLATE PRIMER
P	EPOXY PRIMER
NONE	

BASEPLATE MATERIAL AND FINISH DATA

CODE	MATERIAL	FINISH
CR	A-286 CRES	PASSIVATE

EXAMPLE PART NUMBER

CN614 CR 4 P

PRIMER ON BASEPLATE
 THREAD SIZE - .250-28 UNF-2B
 NUT AND BASEPLATE MATERIAL - A-286 CRES
 BASIC PART NUMBER

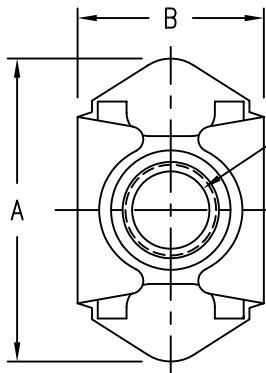
UNLESS OTHERWISE SPECIFIED, ALL DIMENSIONS ARE IN INCHES AND TOLERANCES ARE AS SHOWN BELOW. DIMENSIONAL TOLERANCES AND SYMBOLS PER ANSI Y14.5M-1982.

PROPRIETARY PARTS SHOWN IN THIS DRAWING ARE THE SUBJECT OF ISSUED UNITED STATES AND FOREIGN PATENTS AND PATENTS PENDING. UNAUTHORIZED REPRODUCTION AND/OR DISTRIBUTION OF THIS DRAWING IS SPECIFICALLY PROHIBITED.



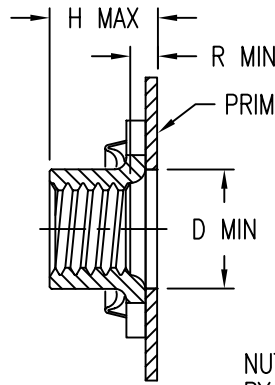
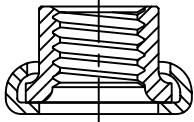
CARSON CITY
 NEVADA 89706

CAD CN614-1		APPROVALS		DATE	TITLE			
ANGLES	±1°	DRAWN	BPEREZ	1DEC03	NUTPLATE, MINIATURE, FLOATING			
.XX	±.03	CHECKED	DOC	1DEC03	SIZE	CAGE CODE	DWG. NO.	REV.
.XXX	±.010	RELEASED	CGH	8DEC03	A	66530	CN614	5
.XXXX	±.001	REVISED	BPEREZ	1DEC03	SCALE	2/1	1DEC03	SHEET 1 OF 2



THREAD T
 THREAD LOCK BY
 ELLIPTICAL DEFORMATION.

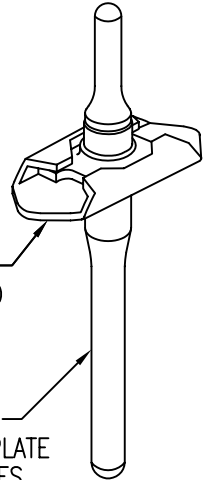
RADIAL FLOAT OF NUT ELEMENT
 0,5 MIN FROM CENTER.
 NUT CAN ENGAGE SCREW FROM
 MAX MISALIGNED POSITION.



PRIMER THIS SURFACE.

NUTPLATE ATTACHED
 BY ADHESIVE APPLIED
 TO THIS SURFACE.

DISPOSABLE ELASTIC
 FIXTURE HOLDS NUTPLATE
 WHILE ADHESIVE CURES.



THREAD AND DIMENSION DATA (ALL DIMENSIONS BEFORE PAINT)

PART NUMBER	THREAD T	A MAX	B MAX	D MIN	H MAX	R MIN	AXIAL TENSILE STRENGTH (kN MIN)	INSTALLATION HOLE RANGE
CN614CR4M	M4 X 0,7	18,0	9,4	5,0	5,1	1,3	7,6	4,0 - 5,0
CN614CR5M	M5 X 0,8	18,8	10,6	6,0	6,1	1,3	10,9	5,0 - 6,0
CN614CR6M	M6 X 1,0	20,4	12,7	7,0	6,8	1,3	19,6	6,0 - 7,0
CN614CR8M	M8 X 1,0	25,7	15,3	9,0	8,2	1,3	32,8	8,0 - 9,0

NUT MATERIAL AND FINISH DATA

CODE	MATERIAL	FINISH	LUBRICATION
CR	A-286 CRES	PASSIVATE	DRI-FILM LUBE

PRIMER ON BASEPLATE

CODE	BASEPLATE PRIMER
P	EPOXY PRIMER
NONE	

BASEPLATE MATERIAL AND FINISH DATA

CODE	MATERIAL	FINISH
CR	A-286 CRES	PASSIVATE

EXAMPLE PART NUMBER

CN614 CR 6M P

PRIMER ON BASEPLATE
 THREAD SIZE - M6 X 1,0
 NUT AND BASEPLATE MATERIAL - A-286 CRES
 BASIC PART NUMBER

UNLESS OTHERWISE SPECIFIED, ALL DIMENSIONS ARE
 IN MILLIMETERS AND TOLERANCES ARE AS SHOWN
 BELOW. DIMENSIONAL TOLERANCES AND SYMBOLS
 PER ANSI Y14.5M-1982.

PROPRIETARY PARTS SHOWN IN THIS DRAWING ARE THE SUBJECT
 OF ISSUED UNITED STATES AND FOREIGN PATENTS AND PATENTS
 PENDING. UNAUTHORIZED REPRODUCTION AND/OR DISTRIBUTION OF THIS
 DRAWING IS SPECIFICALLY PROHIBITED.

GLICK BOND

CARSON CITY
 NEVADA 89706

CAD CN614-2
 METRIC DIMENSIONS

APPROVALS	DATE
DRAWN BPEREZ	21NOV03
CHECKED DOC	21NOV03
RELEASED CGH	8DEC03
REVISED BPEREZ	21NOV03

TITLE
 NUTPLATE, MINIATURE, FLOATING

ANGLES	±1°
.X	±0,8
.XX	±0,25

SIZE	CAGE CODE	DWG. NO.	REV.
A	66530	CN614 (METRIC)	5
SCALE	2/1 21NOV03		SHEET 2 OF 2